



# GAT MONTHLY MEMBERSHIP PROGRESS REPORT

Results as of: 4/30/2023

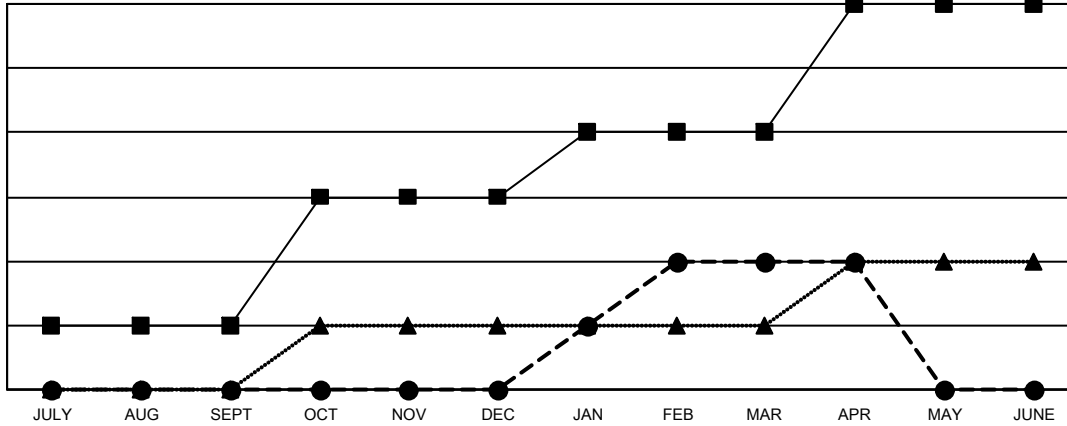
Multiple District 16

LOCATION: NEW JERSEY

Clubs			
RESULTS FOR 2022-2023			
QUARTER	NEW CLUB GOAL	NEW CLUBS	DROPPED CLUBS
JULY/AUG/SEPT	1	0	1
OCT/NOV/DEC	2	0	6
JAN/FEB/MAR	1	2	0
APR/MAY/JUNE	2	0	0

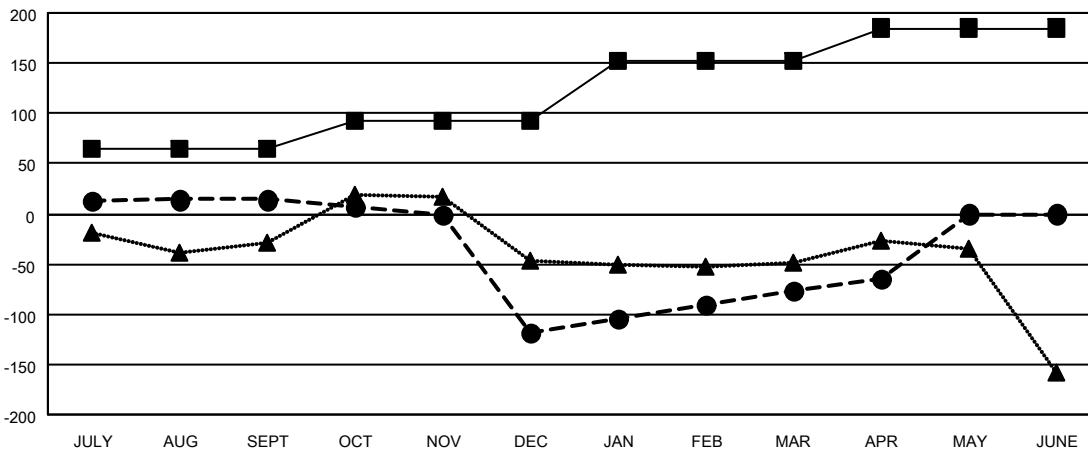
Members			
RESULTS FOR 2022-2023			
QUARTER	MEMBER GROWTH NET GOAL	MEMBER GROWTH ACTUAL	DROPPED MEMBERS ACTUAL (including transfers)
JULY/AUG/SEPT	65	114	92
OCT/NOV/DEC	28	93	219
JAN/FEB/MAR	60	173	123
APR/MAY/JUNE	32	53	38

GOALS AND ACTUAL NEW CLUBS CUMULATIVE



- CURRENT YEAR GOALS FOR NEW CLUBS
- CURRENT YEAR ACTUAL NEW CLUBS
- ▲- LAST YEAR ACTUAL NEW CLUBS

GOALS AND ACTUAL MEMBERS CUMULATIVE



- MEMBER GROWTH NET GOAL
- MEMBER GROWTH ACTUAL
- ▲- LAST YEAR MEMBERSHIP ACTUAL

DROPPED CLUBS: 7	
<b>DROPPED MEMBERS</b>	
DECEASED	56
CLUB CANCELLED	78
OTHER	338
<b>TOTAL</b>	<b>472</b>

81 CLUBS OF 171 ADDED 1 OR MORE NEW MEMBERS

[CLICK HERE FOR CUMULATIVE MEMBERSHIP DATA](#)

GENDER DISTRIBUTION	
MALE	2,540 (64.70%)
FEMALE	1,378 (35.10%)
NON BINARY	0 (0.00%)
PREFER NOT TO ANSWER	8 (0.20%)
<b>TOTAL FAMILY UNIT MEMBERS</b>	<b>744</b>
<b>FAMILY MEMBERS PAYING HALF DUES</b>	<b>389</b>